

JUNE 2017

# PORTLAND'S *Rain* OF GLASS, INC.

A non-profit organization formed to stimulate interest in collectible glass and to provide educational resources and events for the members and the community at large.



## JUNE

**WHERE:** Central Lutheran Church  
1820 NE 21<sup>st</sup> Avenue,  
Portland, OR 97212  
(NE 21<sup>st</sup> & Schuyler)

**WHEN:** Tuesday, June 20, 2017,  
7:00 p.m. to 9:00 p.m.

**GREETERS:** Sandra Millius and Gyrid Hyde-Towle  
(Come early to set up—6:00 p.m.)



### PROGRAM:

## IMPERIAL GLASS COMPANY'S "IRON CROSS,"

**PRESENTED BY RANDY DAVID**

*Randy will share his collection of Imperial Glass Company's art glass marked with the "Iron Cross." This glass was introduced in 1916. It was sprayed with an iridescent mixture and then further worked to create an onion-skin like surface resulting in the name "Stretch Glass." At top is an Imperial bowl with the "Iron Cross" mark. Above is an Imperial vase with the mark.*

**PATTERN OF THE MONTH: "Pickard Plates,"**  
presented by Susan Conroy



*Susan will share her collection of Pickard Collector Plates, made mostly in the 1970s and 1980s. Pictured at left is a Pickard plate featuring Monet's garden.*

**BOARD MEETING:** Tuesday,  
June 13, 2017, 7:00 p.m.  
**ALL MEMBERS WELCOME**



### UPCOMING EVENTS

#### JUNE

4 – Picc-A-Dilly Flea Market, Lane County Fairgrounds, Eugene, Early Shoppers 8-10 a.m., regular hours, 10-4 p.m.

4 – Polk Flea Market, Polk County Fairgrounds, Rickreall, 9 -3 p.m.

11 – The Northwest Flea, Bellevue College, Bellevue, WA, 9-3 p.m.

#### JULY

2-4 – Hailey's Antique Market, Robert McKercher Park, Hwy 75, Hailey, Idaho

14-16 – Christine Palmer Antiques and Collectibles & Vintage Knife Show, Portland EXPO Center, Friday 10-6 (Early Bird), Saturday 9-6 p.m., Sunday, 10-5 p.m.

#### AUGUST

5 – Brownsville Antique Fair & Car Show, Pioneer Park, 9-4 p.m.

2<sup>nd</sup> Saturday (March-November) – Old Mill at Yamhill Flea Market, 140 W. Main St., Yamhill

**Visit the Portland's Rain of Glass website:**

[www.rainofglass.com](http://www.rainofglass.com)

or see us on **FACEBOOK**

**Mailing Address:**

Portland's Rain of Glass  
C/O Ed Martin,  
12764 SE Nixon Ave.,  
Milwaukie, OR. 97222.



## A NOTE FROM YOUR PROG PRESIDENT

As many of you know, the Glass Collectors Convention was a tremendous success. Our speakers were superb, with topics ranging from finding buried glass flasks of considerable value to discovering the techniques involved with fused glass and oh, those wonderful cakes provided for the dessert frenzy. Thank you to everyone who contributed their time and energy to making our 25<sup>th</sup> Convention a worthwhile experience.

This month we will be electing new PROG board members. It looks like we will have some new people on the board who will bring some valuable ideas to what we do. As you are aware, my term as president is coming to an end. The information I have gained has been of immense value to me, and I am sure it will contribute to making me a better member of PROG.

I will continue to support the board as your past president. The experiences I have had over the past two years have been rewarding in giving me many opportunities to connect with our members on a more personal level.

As always,  
Jan Baxter  
Your PROG President

### JUNE MEMBERSHIP

### ROUND UP

You still may pay your dues. Everyone was due by May 31<sup>st</sup> except those who have joined since January 2017, so please pay at the June meeting.

- **MEMBERSHIP IS \$30**
- **FOR 2 OR MORE LIVING AT THE SAME ADDRESS, ADD \$10 PER PERSON**
- **LIFETIME MEMBERSHIP IS \$1000**

Please inform me of any name, address or phone change, and let me know if you want to add or edit the items that you collect.

Make your payment due to "Portland's Rain of Glass" or "PROG." Pay in person at the meeting, or you may mail it to me:

JOI SHERVEY  
654 S.W. Bella Vista Place  
Gresham OR 97080-6526  
503.661.6777

### Food Drive



### PLEASE DONATE IN JUNE OR JULY!

CENTRAL LUTHERAN HAS A PERMANENT  
DONATION BOX IN THE HALLWAY  
UNDER THE COAT RACK.

**NEEDED: FOOD IN PAPER,  
CARDBOARD OR PLASTIC  
CONTAINERS—NO GLASS  
CONTAINERS, PLEASE!**

**AND DON'T FORGET  
BABIES AND PETS!!**

Ed & Sandra Martin donated a gavel with the following wording:

**PROG  
Golden Gavel  
In Memory of  
Al Carder**

Our auctioneers will use it at our auctions and Conventions, and the president will use at monthly meetings.





## AL CARDER

**JULY 5, 1936-APRIL 29, 2017**

They say that when a person dies, it's like a library burning to the ground. The knowledge, experience, humor and special qualities of that person can never be replaced. And so it is with Al Carder, one of our most knowledgeable collectors, best friends and strongest supporters of PROG.

Al was born in Little Birch, WV. He left home when he was 15 and lived in Alaska for four years, then two years in Florida, before settling in Seattle.

He went to work for Safeway in 1959, and worked for them for 40½ years. He met his wife, Carol, in 1965, and they married June 18, 1966. Their daughter, Shawn, was born in 1967. Al was always a collector and started selling in 1983. He loved the thrill of the hunt and sharing his knowledge with everyone. He collected art glass, Blenko, and art from Northwest artists.

Al is survived by his wife, Carol, and his daughter, Shawn. He will be greatly missed.

**In Al's honor, PROG held a paddle raise at the Convention for donations to the American Cancer Society in Al's name. There is still time to donate—send a check to Sandra Martin, 12764 S.E. Nixon, Milwaukie OR 97222.**



**SHAWN, AL and CAROL CARDER**



## DENI SMITH PETER SMITH

**JANUARY 11, 1936-MAY 14, 2017**

Deni was born in Baker City, Oregon and passed away on Mothers Day. She married her husband, Byron, in 1987. They lived in West Hills, California. She loved collecting glass.

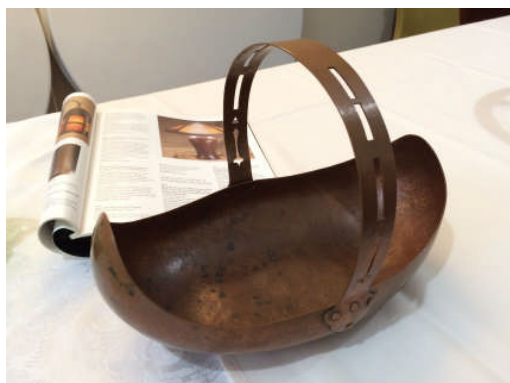
She joined PROG in 2014, but she attended every American Glass Rally/Glass Collectors Convention except two—one because her best friend, PROG member Joanne Voeller, had just passed away, and another because it conflicted with the Indy 500 that she had promised to attend with her family.

She is survived by her husband, Byron, daughters and grandchildren.



## BASKET NIGHT

We had only one talk at our May meeting since it fell during the same week as the Convention. Neal Skibinski and Barbara Coleman led the discussion on baskets brought by: **Jan Baxter**—Blue opalescent hobnail. **Barbara Coleman**—Blue opalescent Fenton hobnail; topaz opalescent Fenton hobnail; cranberry opalescent Fenton hobnail (Fenton did not mark all their baskets until the 1970s). **Ginny David**—Fenton Velva Rose stretch with metal handle; 1970-80 Murano with gold trim; late 19<sup>th</sup> century milk glass with green rim; Murano with gold inclusions. **Diane Foster**—clear with gray cutting, probably Westmoreland Glass Co.; Fenton cranberry hobnail. **Mable Hardebeck**—1980s marked Fenton Butterfly & Cherries, made from a tumbler; deep blue Kanawha hobnail; pink 1920s Imperial #252. **Gyrid Hyde-Towle**—orange Chinese purse. **Debbie Larsen**—green Viking. **Ed & Sandra Martin**—Black Fenton Halloween; pine needle made by Ed's mom. **Mark Moore**—6 Tiffin satin glass: 2 canary, 2 green, 1 blue, 1 orange. **Jackie Searles**—Anchor Hocking apple ice bucket. **Carole Bess White**—Large Bohemian/Czech iridized; tan cased with amber handle; Diamond Glass Co. flat black with green handle; clear, probably U.S. Glass; yellow & black Tango Czech; Czech pink with applied glass rosette; Czech amber with green handle; Bohemian orange & cream by Kralik; multicolored Murano latticino (made from colored glass canes); yellow Murano latticino; Czech amber with prunts and red handle; end-of-day with thorn handle; Czech orange end-of-day with black handle; Czech pink with red handle. **Jean Zitzer**—Dirk Van Erp hammered copper Arts & Crafts movement.



Dirk Van Erp  
hammered  
copper.

L. Czech end-of-  
day donated to  
the 2016 Glass  
Collectors  
Convention raffle  
by Al & Carol  
Carter;

R. Probably U.S.  
Glass from the  
estate of Deanna  
Stevenson.



PHOTOS BY MARK MOORE & NEAL SKIBINSKI



## MORE MAY MEETING GOODIES



## SHOW & TELL

**Jack Bookwalter**—Central European console bowl, c. 1930s; footed tumbler; pitcher, probably 1960s.

**Diane Foster**—Victorian Art Glass pitcher c. 1895; clear glass hurricane shade, possibly Blenko; red hobnail oil lamp made to fit in a wall mount, probably 1960s L.G. Wright.

**Jerry Linschoten**—Consolidated Lamp and Glass Co. Cosmos condiment set, 1898-1905.

**Jackie Searles**—Fostoria Pioneer console bowl with possible Wheeling decoration.



## WINNERS

Suzanne Lemon won the \$5.00 Glassbuck

Diane Foster won the clear basket

Jackie Searles won the hobnail basket

Ginny David won the *Glass and Ceramic Baskets, Identification and Value Guide* book written and donated by Les & Carole Bess White

Mable Hardebeck won the plant donated by Elmer Heffner

PHOTOS BY MARK MOORE & NEAL SKIBINSKI

# GLASS COLLECTORS CONVENTION

Our 25<sup>th</sup> Glass Collectors Convention was a roaring success! Thanks to Chairman Mark Moore and all who worked on the convention or donated auction or raffle prizes: Jan & Don Baxter, Jack Bookwalter, Barbara Coleman, Susan Conroy, Randy & Ginny David, Barbara Dietz, Paul Eastman, Kate Fuller, Jewell Gowan, Mable Hardebeck, Wayne & Linda Husted, Barb Larson, Jerry & Marty Linschoten, Gwenn Nicklous, Christine Palmer & Associates, Joi & Paul Shervey, Dean Six, Neal Skibinski, and Les & Carole Bess White.

Thanks to Randy & Ginny David for donating the wonderful speaker gifts; to Ed & Sandra Martin for donating the Golden Gavel; to Gyrld Hyde-Towle for donating the Ice Cream Social goblets and for the terrific job she did arranging the meals with the Elks, and to Barbara Coleman for making the table decorations.

Neal Skibinski won the early admission tickets to the Portland Expo donated by Christine Palmer & Associates, Jan Baxter won the \$50 Auction Bucks and Gyrld Hyde-Towle won the \$25 Auction Bucks. The raffle netted \$122, and sales of the extra Blenko favors brought in \$175. The combined auctions and Dessert Frenzy totaled \$2300. The paddle raise for a donation to the American Cancer Society in Al Carder's name yielded \$515, and PROG will match \$500, so our donation will be at least \$1015, but contributions are still coming in.

## TOP AUCTION INCOME PRODUCERS

ORAL AUCTION		SILENT AUCTION	
Fish Triangle Vase by Wayne Husted	260.00	First Ice Cream Social Dish—Blenko Water Bottle	30.00
Small Red Fish Vase by Wayne Husted	180.00	Amber Basket w/Blue Handle	20.00
Blenko Amberina Sunburst Decanter	175.00	6 Assorted Porcelain Butter Pats	18.00



L-R: Donna Miller, Gwenn Nicklous, Jean Zitzer, Diane Foster and Dave Sprau admiring Wayne Husted's display



Randy David, Ed Martin & speaker Paul Eastwood unleashing their inner glitz



Speaker Wayne Husted signing some pieces as Dave Sprau looks on



Speaker Dean Six



Two of "The Barbs," Barbara Larson & Barbara Dietz



The Ice Cream Social awaits!



Speaker Paul Eastwood



Speaker Richard Glenn discussing Moderne glass with Susan Conroy

PHOTOS BY BARBARA COLEMAN & MARK MOORE



## CONVENTION MEMORIES



Sandra Millius admires speaker Richard Glenn's green Moderne Glass collection



Speaker Jack Bookwalter with some of his Moderne Glass



Sandra Martin, Convention Business Manager, crunching numbers



First Convention Chair Jewell Gowan sharing 25 years' worth of memories.



Ginny David, Neal Skibinski, Mary Ann Specht and Celeste Sprague getting in trouble at the silent auction



Linda Husted and Gyrid Hyde-Towle catching up at Wayne's display



Oral Auction preview



Dessert Frenzy L-R: pineapple upside-down cake made and donated by Jewell Gowan, chocolate mousse cake donated by Jan Baxter, raspberry chiffon cake donated by Gwenn Nicklous, lemon graffiti cake donated by Barb Larson, carrot cake made and donated by Kate Fuller



Speaker Sam Kissée discussing Victorian Art Glass with Convention Chair Mark Moore operating the slide projector

PHOTOS BY BARBARA COLEMAN & MARK MOORE

## *Portland's Rain of Glass, Inc.*

YGPC

130 West Cleveland Street

Woodburn, Oregon 97071

### ❖INSIDE❖

*Portland's Rain of Glass, Inc.*

- *Remembering Al Carder*
  - *Basket Night*
  - *Show & Tell*
- *Glass Collectors Convention*



## **A NEW SALE IS RACING DOWN THE FAIRWAY!!**

Our former Rain of Glass Sale is moving to Portland Meadows in 2018! Our show dates will be

**FRIDAY, JANUARY 27 & SATURDAY, JANUARY 28, 2018**

So, we have a new venue, now we need a new name.

We have had many good suggestions, but the favorite so far seems to be:

### **VINTAGE MARKETPLACE at PORTLAND MEADOWS**

DO **YOU** HAVE AN IDEA FOR A GREAT NAME? WE WANT IT TO SAY "VINTAGE" INSTEAD OF "ANTIQUES AND/OR COLLECTIBLES" AND HAVE ONLY 3 OR 4 WORDS

►AND◄

WE WANT TO KEEP OUR GLASS BUT INCLUDE OTHER TYPES OF ANTIQUES & COLLECTIBLES—WE ARE LOOKING FOR SOME QUALITY "GENERAL" DEALERS TO JOIN OUR SALE!

►AND◄

APPEAL TO BOTH A YOUNGER **AND** OUR EXISTING OLDER AUDIENCE, IN AN EVENT SPACE THAT IS ABOUT HALF OF WHAT WE USED FOR 2017 AT THE WASHINGTON COUNTY FAIRGROUNDS.

### **PLEASE SHARE YOUR SUGGESTIONS:**

Carole White/cbessw@aol.com, 503.901.0505 ►OR◄ Ed Martin/ensmartin@comcast.net, 503.502.4455

We will have a sale meeting Tuesday, June 13, at Central Lutheran at 6:00, before the board meeting. All are welcome!