



PORTLAND'S Rain OF GLASS, INC.

A non-profit organization formed to stimulate interest in collectible glass and to provide educational resources and events for the members and the community at large.

JULY

WHERE: Central Lutheran Church
1820 NE 21st Avenue,
Portland, OR 97212
(NE 21st & Schuyler)

WHEN: Tuesday, July 18, 2017,
6:30 p.m. to 9:00 p.m.

GREETERS: Karen Young and Diane Foster
(Come early to set up—6:00 p.m.)

JULY PICNIC POTLUCK

SPECIAL:

It's time for the annual Portland's Rain of Glass picnic potluck. Bring a side dish, salad, dessert or appetizer. PROG will provide meat and beverages. Paper plates and plastic utensils provided. Bring your own place settings if you wish. Set up begins at 6:00 p.m. Dinner is at 6:30 p.m.

REMEMBER THE FOOD DRIVE—BRING CANNED OR BOXED FOOD ITEMS FOR NEEDY FAMILIES!

PROGRAM: "FAIRY LIGHTS,"
displayed by Elmer Heffner

Elmer will display his collection of Fairy Lights by Fenton, L.G. Wright and Westmoreland glass companies. Pictured below, left is a red Fairy Light by Fenton. At right is a blue Fairy Light by L.G. Wright.



BOARD MEETING:
Tuesday,
July 11, 2017,
7:00 p.m.
**ALL MEMBERS
WELCOME**



UPCOMING EVENTS

JULY

2-4 – Hailey's Antique Market,
Robert McKercher Park, Hwy 75,
Hailey, Idaho

9 – Medford Giant Flea Market,
Medford National Guard Armory,
9 a.m.-4 p.m.

14-16 – Christine Palmer Antiques
and Collectibles & Vintage Knife
Show, Portland EXPO Center,
Friday 10-6 (Early Bird), Saturday
9-6 p.m., Sunday, 10-5 p.m.

AUGUST

5 – Brownsville Antique Fair & Car
Show, Pioneer Park, 9-4 p.m.

12 – Aurora Outdoor Antiques &
Vintage Fair, downtown, 8 a.m.-4
p.m.

26 – Camas, WA, Vintage & Art
Fair, downtown, 9 a.m.-4 p.m.

27 – Oregon City Antique Fair and
Vintage Market, downtown, 8 a.m.-
4 p.m.

2nd Saturday (March-November) –
Old Mill at Yamhill Flea Market,
140 W. Main St., Yamhill

Visit the Portland's Rain of
Glass website:

www.rainofglass.com

or see us on FACEBOOK

Mailing Address:

Portland's Rain of Glass
C/O Ed Martin,
12764 SE Nixon Ave.,
Milwaukie, OR. 97222.

POTLUCK



AT THE JULY 18 CLUB MEETING

THANKS TO ALL WHO SIGNED UP IN ADVANCE
TO BRING FOOD. BUT IF YOU DIDN'T SIGN UP,
JUST BRING WHAT YOU LIKE—
IT'S ALL GOOD AT THE POTLUCK!!

MEAT & BEVERAGES PROVIDED BY PROG

BREAD & ROLLS

LINDA SPRAU
CAROLE BESS WHITE

SALADS

BARBARA COLEMAN
SUSAN CONROY
GINNY & RANDY DAVID
MABLE HARDEBECK
BARB LARSON
EDNA McLEAN
SANDRA MILLIUS
GWENN NICKLOUS

BEANS & SIDE DISHES

KATE FULLER
DEBBIE LARSEN
SUZANNE LEMON

FRUIT

DOREEN SMITH
JEAN ZITZER

DESSERTS

DIANE FOSTER
ELMER HEFFNER
RON & DONNA MILLER
JOI SHERVEY
KAREN YOUNG

SURPRISES

BARBARA DIETZ
JEFF & MARY ANN SPECHT



ARE MY DUES DUE?

If you did not pay your dues in May or June,

YES!

your membership is due.

All memberships expired May 31, 2017.

If you haven't paid your 2017-18 dues,
then your membership has expired.

YEARLY MEMBERSHIP OPTIONS:

SINGLE

(One person/one
address)
\$30.00

DUAL

(Two people/one
address)
\$40.00

FAMILY

(Three people/one
address)
\$50.00

If you are not sure whether or not you have paid, just
call Joi Shervey at 503-661-6777. Please pay at the
July club meeting, or make out your checks to
Portland's Rain of Glass or "P.R.O.G." and mail to:

Joi Shervey
654 S.W. Bella Vista Place
Gresham, OR 97080



PROG'S 2017 SUMMER FOOD DRIVE

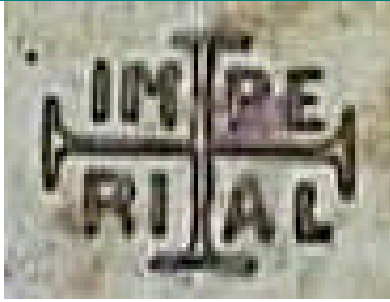
Please bring donations of food in cans or
paper/cardboard packages
(no glass or perishable items, please)
to the July meeting



to any meeting as Central Lutheran has a
permanent food donation bin.

**PLEASE PLACE FOOD DONATIONS
IN THE WOODEN FOOD BINS UNDER
THE COAT RACK
IN THE CHURCH LOBBY**

IMPERIAL'S "IRON CROSS" WITH RANDY "MR. MANTIQUES" DAVID



Cape Cod and Candlewick may have supported the Imperial Glass Company or even saved it, but in earlier days the company dared to be edgy and even radical as it moved into art glass. It was a move that was not entirely successful, but collectors might disagree with that.

Imperial's "Iron Cross" is not a glassware line or pattern; rather, it is a trademark of the company. It was their third mark, and it was first used in 1913 and continued into the 1920s.



Founded in Bellaire, Ohio, in 1901, Imperial produced utility ware, lampshades and 15 tableware lines. However, their sales manager, Victor Wicke, kept a close watch of what their competitors were doing, especially Fenton's new iridescent ware. In 1910, Wicke became president of Imperial, and he was avid for art glass. Inspired by the competition, Wicke took a chance and started Imperial's **Carnival Glass, Free Hand, Lead Lustre, and Art Glass** lines.

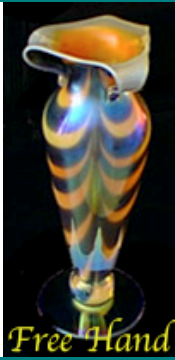


Inspired by Fenton's new iridescent ware that we now call **Carnival Glass**, in 1909 Imperial began producing its own iridescent line. Their first color was Rubigold, which collectors today call Marigold.

In 1912 Imperial introduced **Nuart**, an imitation Tiffany-style glass with its own mark.



What we call Stretch Glass, Imperial called simply **Art Glass**. This line, introduced in 1916, was a radical departure from their earlier output. The pieces were pressed in new moulds with simple shapes and smooth lines, and afterwards were "triple-doped," or sprayed several times with the mixture of chemical salts that would iridize them. Then they were hand-shaped, which gave the surface a "crizzled" or "onionskin-like" appearance. Imperial called the colors of this new glass Pearl White, Pearl Ruby, Pearl Green and Pearl Amethyst. Most had the Iron Cross mark.



In 1923, Wicke decided to gamble on art glass. He hired several skilled, East Coast glassmakers to create **Free Hand**, a line of unique, artistic, hand-blown glassware made without the use of moulds or presses. Although the line was beautiful and admired by the trade papers, the high cost of producing it caused it to be unprofitable, so after only a year it had to be discontinued.

Legend has it that during the Depression Imperial sold its remaining stock of Free Hand for 10¢ a barrel—if you had a rail car!

Lead Lustre, a mould-blown line, was introduced in 1924 to offset the losses incurred by Free Hand. Its colors were similar to Free Hand, but it did not have the artistic design treatments of Free Hand such as the Nailsea effect or Hanging Hearts.

Ironically, the lines that made the least money for Imperial are the ones most prized by collectors today.



PICKARD COLLECTOR PLATES WITH SUSAN CONROY



You might not think of Fostoria as having china collector plates, but they collaborated with Pickard China from 1970 to 1980, and collector plates were part of it. Fostoria and Pickard created beautiful stemware and china patterns that complemented each other very well.

This was a period of increased interest in collector plates. Pickard developed several limited edition plates available to the higher-end market during this time. Some of their images were *The Children of Renoir*; *The Lockhart Wildlife Series*; *Christmas Religious Works in the National Gallery of Art*, and *Gems of Nature* by Cyndi Nelson. Each image had at least four plates.

The plates won several awards from The National Association of Limited Edition Dealers, Plate Collector Magazine and the Bradford Exchange.

Pickard continued to make plates until about 1990. Pickard plates were seen as something that would increase in value and be an investment, as well as being beautiful. However, with changing demographics, the prices have fallen to about 15% to 25% of their original cost. Nevertheless, Pickard plates are a lovely addition to your home.





PHOTOS BY MARK MOORE AND NEAL SKIBINSKI

2017 BOARD ELECTIONS

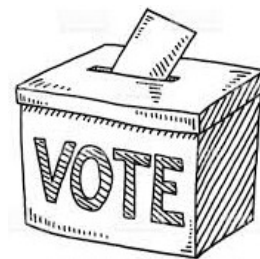
Thanks to Carole Bess White and Mable Hardebeck for serving as our Elections Nominating Committee.

Thanks also to Suzanne Lemon, Edna McLain and Joi Shervey for serving on the board. Their terms expired this year, and they decided not to continue on the board.

Earlier this year, the board voted to extend Neal Skibinski's board term for another two years, which the board is entitled to do pursuant to Bylaws Article IV, E.

Our June meeting is our Annual Meeting when elections are held and bylaws changes are presented and approved, if any. At our June 20 Annual Meeting, three members were elected to the board: Ginny David, Randy David and Mable Hardebeck. Thanks to Mable Hardebeck for providing ballot slips, and to Barbara Dietz and Barb Larson for counting them. There were no bylaws changes presented.

At the July board meeting, officers will be elected from among the board members. We encourage everyone to attend. It will be Tuesday, July 11, in Central Lutheran's small meeting room.



WINNERS



And the winners are . . .

Door Prize:

\$5.00 GLASSBUCK—
WON BY GWENN NICKLOUS

Raffle Prizes:

CACTUS PLANT DONATED BY ELMER HEFFNER—
WON BY MARY ANN SPECHT

CACTUS PLANT DONATED BY ELMER HEFFNER—
WON BY JAN BAXTER

FOSTORIA AMBER FOOTED BOWL—
WON BY GWENN NICKLOUS

FOSTORIA BAROQUE CONSOLE SET—
WON BY LINDA SPRAU

SHOW AND TELL



NEWSLETTER STAFF

Editor—

Carole Bess White

Front Page Editor—

Barbara Coleman

Photographers—

Neal Skibinski & Mark Moore

Writers, Contributors and Proofreaders—

Jan Baxter

Barbara Coleman

Jewell Gowan

Mable Hardebeck

Mark Moore

Neal Skibinski

Portland's Rain of Glass, Inc.

YGPC

130 West Cleveland Street

Woodburn, Oregon 97071

❖INSIDE❖

Portland's Rain of Glass, Inc.

- Potluck July 18th
- Imperial's "Iron Cross"
- Pickard Collector Plates
- 2017 Board Elections
- Show & Tell



A NEW SALE IS RACING DOWN THE FAIRWAY!!

Our former Rain of Glass Sale is moving to Portland Meadows in 2018! Our show dates will be

FRIDAY, JANUARY 27 & SATURDAY, JANUARY 28, 2018

OUR NEW NAME IS:

VINTAGE MARKETPLACE at PORTLAND MEADOWS

NEED MORE INFORMATION? CONTACT:

Carole White/cbessw@aol.com, 503.901.0505 ►OR◄ Ed Martin/ensmartin@comcast.net, 503.502.4455

We will have a sale meeting **Tuesday, July 11**, at Central Lutheran at 6:00, before the board meeting. All are welcome!

