



# PORTLAND'S *Rain* OF GLASS, INC.

A non-profit organization formed to stimulate interest in collectible glass and to provide educational resources and events for the members and the community at large.

## SEPTEMBER

**WHERE:** Central Lutheran Church  
1820 NE 21<sup>st</sup> Avenue,  
Portland, OR 97212  
(NE 21<sup>st</sup> & Schuyler)

**WHEN:** Tuesday, Sept. 20, 2016,  
7:00 p.m. to 9:00 p.m.

**GREETERS:**  
Jean Zitzer and Diane Foster  
(Come early to set up—6:00 p.m.)

### UPCOMING EVENTS

#### SEPTEMBER

- 4 – Polk Flea Market, Rickreall
- 10 – Antiques in the Street, Albany
- 11 – Coburg Antique Fair
- 17 – Salem Collectors Market, Salem Armory
- 17 – Treasures in the Attic, Yamhill Heritage Center, McMinnville
- 18 – Picc-A-Dilly Flea Market, Lane Co. Fairgrounds, Eugene
- 25 – Rose City Collector's Market

#### OCTOBER

29-30 –Christine Palmer EXPO,  
Portland Expo Center

Every Sunday—Portland's  
Indoor/Outdoor Flea Market, 9 a.m.  
to 2:30 p.m., 5400 N Lombard,  
Portland, (one block west of  
Portsmouth on Lombard)

2<sup>nd</sup> weekend (March-December)  
Old Mill at Yamhill Flea Market,  
140 W Main St., Yamhill

### PROGRAM:

## RHINESTONE NIGHT!

*Get your Glitz on with the Glitter Girls—Ginny David, Barbara Coleman and Carole Bess White. The girls will cover the history of several famous American rhinestone companies, talk about fakes, repos and identification, and introduce you to new Chinese rhinestones. You won't want to miss this chance to sparkle. Bring your favorite rhinestone pieces to share at show and tell. They may even do ID if time permits. Pictured at top is a new Chinese rhinestone piece. Above is a likely Juliana, c. 1960s, rhinestone brooch. Below right is a Chinese piece. Center—a group of unsigned beauties. Below left is an Eisenberg Original.*



### BOARD MEETING:

Tuesday, Sept. 13, 2016, 7:00 p.m.  
ALL MEMBERS WELCOME

Visit the Portland's Rain of  
Glass website:

[www.rainofglass.com](http://www.rainofglass.com)

or see us on FACEBOOK

Mailing Address:

Portland's Rain of Glass  
C/O Ed Martin,  
12764 SE Nixon Ave.,  
Milwaukie, OR. 97222.

## EVELYN CLINK

1935-2016



Longtime PROG member Evelyn Clink passed away on July 15, 2016.

Evelyn and her husband of 61 years, Bob, joined PROG in 1997. They ran our Entertainment Book fundraiser for the past several years.

Evelyn graduated from Jefferson High school and worked as a bookkeeper in Portland. She also belonged to Senior Studies Institute, Elks, Friends of the Library and Multnomah County Master Gardeners.

Upon Evelyn's passing, Bob generously donated 18 boxes of glass and collectibles to the PROG auction. Thanks to Joi and Paul Shervey for transporting this wonderful donation. PROGgers will start seeing pieces at our November Mini Auction.

In keeping with our tradition when a member passes away, a book will be added to PROG's library in Evelyn's name.



## A NOTE FROM YOUR PROG PRESIDENT

Fall is almost here and PROG is looking forward to another year of activities we all know and love. Plans are underway for our annual Sale and the celebration of our 25<sup>th</sup> Convention. With our new slate of officers, we are ready to roll:

President—Jan Baxter

Vice President—Ed Martin

Treasurer—Sandra Martin

Secretary—Carole Bess White

This month's general meeting will feature Rhinestone Night. Carole Bess White has graciously agreed to chair the meeting due to the fact that both Ed Martin and I will be out of town. I usually try to schedule trips around our meetings, but this one escaped me. So—THANK YOU CAROLE BESS—and I will see you all in October.

—Jan Baxter  
PROG President

PS—We did not have a food sign-up for September at our July meeting. Please consider bringing a food item to share.



## PLEASE RE-ENROLL in THE FRED MEYER REWARDS PROGRAM SO PROG CAN CONTINUE TO RECEIVE DONATIONS FROM THEM!

### EVERYONE HAS BEEN UN-ENROLLED BY FRED MEYER, SO PLEASE:

- ◆ Relink your card to our Community Rewards by logging on to your account at [www.fredmeyer.com/communityrewards](http://www.fredmeyer.com/communityrewards). PROG's Fred Meyer ID # is 85577.
- ◆ Every time you shop and use your Rewards Card, you continue to help us earn a donation.

**YOU STILL EARN ALL OF YOUR REWARDS POINTS, FUEL POINTS & REBATES**

[www.fredmeyer.com/communityrewards](http://www.fredmeyer.com/communityrewards)

### YOUR NEWSLETTER COMMITTEE—FEEL FREE TO SUGGEST STORY IDEAS!!

**CAROLE BESS WHITE,**  
EDITOR  
503.901.0505  
[cbessw@aol.com](mailto:cbessw@aol.com)

**BARBARA COLEMAN,**  
FRONT PAGE EDITOR  
503.281.1823  
[colelee@easystreet.net](mailto:colelee@easystreet.net)

**NEAL SKIBINSKI,**  
HEAD PHOTOGRAPHER  
503.888.6106  
[radauti@rdrop.com](mailto:radauti@rdrop.com)

**JEWELL GOWAN,**  
PROOFREADER  
503.510.9137  
[jewellsbks@aol.com](mailto:jewellsbks@aol.com)

**PUBLISHER: WOODBURN PRINTING**





## JEWELL'S 90<sup>th</sup> AT PROG'S AUGUST PICNIC!!

PROG members joined Jewell Gowan's family and friends to celebrate her 90<sup>th</sup> birthday at our annual summer picnic on Saturday, August 13.

Jewell hosted the picnic at the rec center in her manufactured home park. Thanks to Jewell's family for setting up, cleaning up and organizing, and to all who brought food, and to Ed & Sandra Martin for the cake.

PICTURED AT LEFT ARE GYRID HYDE-TOWLE, MABLE HARDEBECK, JEWELL, SUSAN CONROY AND CAROLE BESS WHITE.



NEAL SKIBINSKI ENJOYING  
A PIECE OF CAKE



PRESIDENT JAN BAXTER AND JEWELL  
CUTTING THE CAKE



JACK BOOKWALTER ABOUT TO  
TASTE-TEST THE CAKE

PHOTOS BY BARBARA COLEMAN



## TUESDAY, NOV. 15 AT THE CLUB MEETING DONATIONS WELCOME!!

Please bring your clean, undamaged glass, collectible or gift item donations to the September or October meeting.

**IF YOU WISH TO BE CREDITED FOR YOUR DONATIONS, PLEASE INCLUDE A LIST  
AND/OR PUT A STICKY NOTE WITH YOUR NAME ON EACH PIECE  
(STICKY NOTES AVAILABLE AT THE MEETINGS)**

Questions? Carole Bess White, 503-901-0505, cbessw@aol.com

## OUR FIRST ANNUAL “MEMBER OF THE YEAR” AWARD AND CARNIVAL GLASS WITH ELMER HEFFNER



PRESIDENT JAN BAXTER PRESENTING THE  
MEMBER OF THE YEAR AWARD TO ELMER



PORTLAND'S RAIN OF GLASS, INC.  
2016  
**MEMBER OF THE YEAR**  
**ELMER HEFFNER**  
IN RECOGNITION OF HIS SERVICE  
AND DONATIONS TO THE CLUB

THE AWARD



ELMER AND ED MARTIN TALKING ABOUT  
CARNIVAL GLASS

We so appreciate all of the wonderful things our members do for PROG, and we want to recognize their contributions in a meaningful way.

So we have started a “Member of the Year” award to thank someone who has done a lot for the club, and Gyrid nominated and the board voted that the first recipient be Elmer Heffner.

Elmer generously donates plants he grows himself for our monthly raffles, and there is always great competition to win one. He rides MAX to the Washington County Fairplex to help set up and tear down our January Sale. He also donates glass to our auctions, and he has become our designated potluck glass displayer, with displays at every July and December potluck.

This time for our July potluck meeting, Elmer chose to display pieces from his fabulous collection of antique Carnival Glass.

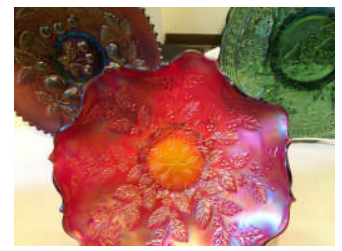
Elmer and his late wife Velma began collecting Carnival Glass after they saw a story in the August 1965 issue of *Woman's Day* magazine. The article showed some of the more than 70 colors that Carnival glass was made in, and they were hooked.



The Northwest Carnival Glass Club started in 1974, and Elmer and Velma joined. One of the founders was Joe Merrifield, who spoke on Carnival Glass at an early American Glass Rally (now known as the Glass Collectors Convention).

Like most of what we all collect, Carnival Glass is no longer being made. You might say that the Carnival Glass Era began and ended with the Fenton Art Glass Company 1908-2007. Although they did not make it continuously, Fenton was the first to make it, and the last company still making it when they closed.

Will it be reproduced? It's doubtful as the process of salting a piece and re-firing it to iridize the color is expensive.



PHOTOS BY NEAL SKIBINSKI



## MORE CARNIVAL GLASS GEMS





**2017**  
**SALE**



## **SALE COMMITTEE MEETING**

**TUESDAY, OCTOBER 4**

6:00 P.M. NO-HOST DINNER

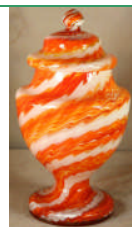
7:00 P.M. MEETING

**ELMER'S RESTAURANT**  
**1001 N.E. SANDY BLVD.**  
**PORTLAND OR 97220**

R.S.V.P. 503.901.0505  
cbessw@aol.com



**CELEBRATING**  
**25**  
**Years**



**LET'S MAKE OUR 25<sup>th</sup> REALLY SPECIAL!!**

## **CONVENTION COMMITTEE MEETING**

**TUESDAY, SEPTEMBER 27**

6:00 P.M. NO-HOST DINNER

7:00 P.M. MEETING

**ELMER'S RESTAURANT**  
**1001 N.E. SANDY BLVD.**  
**PORTLAND OR 97220**

R.S.V.P. 503-286-5224  
mark@pdxhistory.com

**37<sup>th</sup> ANNUAL P.R.O.G.**

# **SALE**

**DECADES OF**  
**GLASS ♦ CHINA**  
**POTTERY**  
**SILVER ♦ LINENS**  
**KITCHENWARE**  
**JEWELRY**  
**MUCH MORE**



**A WONDERFUL  
ARRAY OF**  
**TREASURES**  
**FOR YOU &  
YOUR HOME!**

**JANUARY 28 & 29, 2017**

**WASHINGTON COUNTY FAIRGROUNDS, HILLSBORO, OREGON**

**MEMBERS OF PORTLAND'S RAIN OF GLASS GET FREE ADMISSION!!**

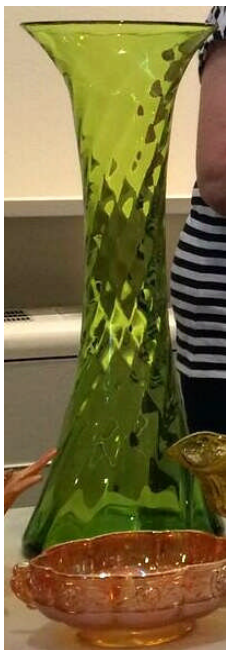
**WHY NOT VOLUNTEER AT THE CONVENTION AND THE SALE??**

**LOTS OF SIT-DOWN JOBS ARE AVAILABLE!!**

**COME TO THE NEXT COMMITTEE MEETING AND FIND OUT HOW TO GET INVOLVED!**

**WHERE ELSE COULD YOU FIND THIS MUCH FUN FOR FREE?**





## SHOW AND TELL

Leslie Anderson—cone-shaped “Magna” pattern glass vase c. 1895; Fostoria “Baroque” two-light candleholder with “Navarre” etching, c. 1936.

Diane Foster—1960s-70s amber comport; swan bowl by Viking with ruffled bottom; purple bowl with clear swan neck and undulating foot; thru-of-the-century Bohemian sweetmeat comport with engraving and intact gilt.

Rosemary Joslin—modern lead glass candle holder.

Ed & Sandra Martin—1969 green Blenko vase designed by Joel Myers.

Joi & Paul Shervey—1940s Jeannette “Holiday” handled cake plate; Jeannette Carnival Glass bowl; cold painted bowl, probably Chinese.

Carole Bess White—Davidson “Gateshead” blue pearline handled bowl made c. 1891, prior to Carnival Glass.

## WINNERS

Paul Shervey won the \$5.00 Glassbuck

Gwenn Nicklous won a plant donated by Elmer Heffner

Linda Sprau won a flamingo lawn ornament donated by Carole Bess White

Debby Larsen won a Federal “Diane” bowl donated by Gyrid Hyde-Towle

## THE SALE OF THE CENTURY!!



When Gyrid Hyde-Towle has a sale, she REALLY has a sale! Gyrid wanted to downsize a bit, so she enlisted PROGgers Ed and Sandra Martin of E & S Antique Finders to run the sale at a house Gyrid owns in the Alberta Arts District in July, and she asked the club to help as well.

Gyrid is so special and does so many wonderful things for PROG that we all would have helped regardless, but to sweeten the deal Gyrid promised to donate a portion of the proceeds to PROG. After all was said and done, not only did Gyrid donate a substantial amount of money, she also donated many nice pieces of glass to our November Mini Auction.

On top of all the literally hundreds of items that were washed, packed and transported to the house, there also were more than 200 additional volunteer hours put in by Jack Bookwalter, Barbara Coleman, Diane Foster, Fred Leeson, Suzanne Lemon, Ed & Sandra Martin, Sandra Millius, Joi & Paul Shervey, Mary Ann & Jeff Specht, Linda & Dave Sprau, Carole Bess White and Karen Young plus Gyrid's daughters Celeste Sprague and Ardis Yingst and Gyrid herself.

Thanks to Gyrid for her tremendous generosity, and thanks to all who helped make the event such a success.

Columbia Children's Arboretum, the Portland park that Gyrid Hyde-Towle and her late husband Dick were instrumental in creating, has secured a \$1.1 million grant from the city to improve the park.

The money comes from construction development funds rather than from tax dollars, and it will be used for a paved, multi-use trail and other improvements.



## *Portland's Rain of Glass, Inc.*

YGPC  
130 West Cleveland Street  
Woodburn, Oregon 97071

### ❖ INSIDE ❖

*Portland's Rain of Glass, Inc.*

- *Jewell's 90th Picnic*
- *Member of the Year*
- *President Jan's Message*
  - *Show & Tell*



**WHICH ARE VINTAGE AND WHICH ARE BRAND NEW?**

**COME TO RHINESTONE NIGHT ON SEPTEMBER 20 AND LEARN TO TELL THE DIFFERENCE!**