

PORTLAND'S *Rain* OF GLASS, INC.

A non-profit organization formed to stimulate interest in collectible glass and to provide educational resources and events for the members and the community at large.



NOVEMBER



WHERE: Central Lutheran Church
1820 NE 21st Avenue,
Portland, OR 97212
(NE 21st & Schuyler)

WHEN: Tuesday, November 17, 2015,
7:00 p.m. to 9:00 p.m.

GREETERS: Debbie Larsen
& Gwenn Nicklous
(Come early to set up—6:00 p.m.)

MINI-AUCTION!

It's time for PROG's SEVENTH Annual November Mini-Auction. Many pieces of collectible glass will be offered for your buying pleasure. Or consider giving a beautiful piece of glass for the holidays!! Get your pocketbooks ready for a great purchase at the November Meeting.

PROGRAM:

“1970S STONEWARE AND THE NEW BOHEMIAN LOOK”

Presented by Barbara Coleman

Did you throw out your 1970s Stoneware? Too bad for you—it's back! It's now all the rage to decorate in the “New Bohemian” style, including assorted 1970s pottery-like dishes. Barbara will share her 1970s Dansk Nielstone in “Spice,” along with a variety of other patterns popular in the 1970s and now in fashion once again. Pictured at top is a Dansk Nielstone “Spice” Coffeepot. Above is a 1970s Arrowstone Coffeepot. Below are a sugar and creamer in 1970s Mikasa Potter's Art “Fire Song.”



BOARD MEETING:
Tuesday, November 10, 2015,
7:00 p.m.
ALL MEMBERS WELCOME

UPCOMING EVENTS

NOVEMBER

1 – Polk Flea Market, Rickreall

7-8 – Palmer Puyallup Expo,
Puyallup, WA

8 – Picc-a-Dilly Flea Market, Lane
County Fairgrounds, Eugene

15 – Rose City Collectors Market,
Airport Holiday Inn's Columbia
Conf. Center, 9 a.m.-2:30 p.m.

15 – Medford Giant Flea Market,
Medford Armory

15 – Salem Collectors Market,
Salem Armory

20-22 – Bend Antiques & Artisan
Show, Hollinshead Barn, 1235 NE
Jones Rd., Bend

Every Sunday—Portland's
Indoor/Outdoor Flea Market, 9 a.m.
to 2:30 p.m., 5400 N Lombard,
Portland, (one block west of
Portsmouth on Lombard)

2nd Weekend – Old Mill at Yamhill
Flea Market, 140 W. Main St.,
Yamhill, March-December

Visit the Portland's Rain of
Glass website:

www.rainofglass.com

or see us on FACEBOOK

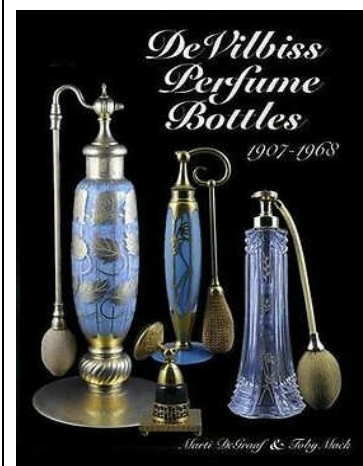
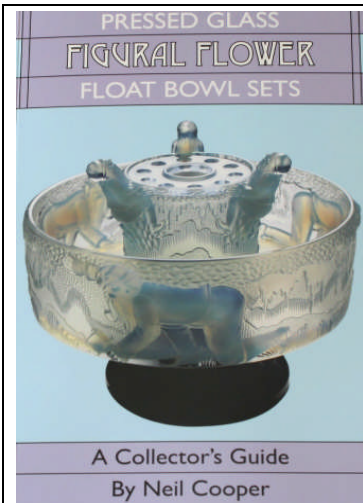
Mailing Address:
Portland's Rain of Glass
C/O Ed Martin,
12764 SE Nixon Ave.,
Milwaukie, OR. 97222.

OCTOBER Meeting



PRIZES PRIZES PRIZES!!

Raffle prize of a cream and sugar donated by Janice Wallace won by Jeff Specht
 Raffle prize of a Christmas cactus donated by Elmer Heffner won by Jack Bookwalter
 Raffle prize of a Christmas cactus donated by Elmer Heffner won by Ed Martin who gave it to Jan Baxter
 Raffle prize of three handmade stuffed pumpkins donated by Barbara Coleman won by Gyrid Hyde-Towle
 Progressive raffle prize of a Viking Long-tailed Bird covered candy donated by Les & Carole Bess White won by Linda Sprau



**DO YOU HAVE
 GLASS AND
 ANTIQUE
 REFERENCE
 BOOKS,
 COOKBOOKS
 OR OTHER
 NICE BOOKS
 THAT YOU NO
 LONGER USE?**

**HOW ABOUT
 DONATING THEM
 TO PROG'S USED
 BOOK SALE AT
 THE 2016
 RAIN OF GLASS
 SALE?**

Bring them to a club meeting or we can pick them up if that is better for you.
 Questions?
 Carole Bess White
 503-901-0505



community rewards

Where shopping & giving unite

YOU CAN HELP PROG EARN DONATIONS JUST BY SHOPPING WITH YOUR FRED MEYER REWARDS CARD!

Fred Meyer donates \$2.5 million per year to non-profits in Alaska, Idaho, Oregon and Washington, based on where their customers tell them to give.
 Here's how the program works:

- Sign up for the Community Rewards program by linking your Fred Meyer Rewards Card to Portland's Rain of Glass at www.fredmeyer.com/communityrewards
- You can search for us by name, Portland's Rain of Glass, or by our non-profit number, 85577.
- Then, every time you shop at Fred Meyer and use your Rewards Card, you will help PROG earn a donation from Fred Meyer at no cost to you!
- You still earn your Rewards Points, Fuel Points and Rebates just as you do today.
- If you don't have a Rewards Card, they are available at the Customer Service desk of any Fred Meyer store.

FOR MORE INFORMATION, PLEASE VISIT
www.fredmeyer.com/communityrewards

SHOW & TELL

Dennis Headrick—Heisey “Pineapple & Fan” salt dip; Heisey “Urn” pattern pitcher c.1909-1912, one of their many Colonial patterns

Gyrid Hyde-Towle—blue art glass vase she purchased at the Central Lutheran Mega Sale; EAPG covered butter dish

Jerry Linschoten—Greentown Glass hairbrush; Greentown Glass Cord Drapery toothpick holder that still has a trace of gold on the rim

Joi Shervey—cased glass heart ornament rolled in chunky frit and angel figurine from her recent trip to Mexico

Jeff & Mary Ann Specht—studio art glass vase marked 1993; studio art glass vase with round belly

David Sprau—Great Northern Railway Empire Builder silver plate bread or roll tray with Egyptian lotus blossom decoration; Spokane-Portland-Seattle Railroad silver spoon; Railway creamer, a replica of an Atchison Topeka & Santa Fe piece

Linda Sprau—cased orange and white glass vase; art glass bowl with pulled point rim, probably Murano or European

Carole Bess White—red glass basket with white Coca-Cola logos, possibly Italian; Czech purple “end of day” perfume c. 1920s-30s



Show
&
Tell



HEISEY TUDOR WITH CAROLE BESS WHITE & DENNIS HEADRICK

Heisey's Tudor pattern, sometimes referred to as Rib and Panel or Wagon Wheel, was produced from 1923 to 1939. Although it was a tableware line, it had no dinner plates; the largest plate was 8", which is OK for luncheon, dessert or salad.

Tudor was made in crystal, and less than half of the pieces were also made in Moongleam (green) and Flamingo (pink). Very few pieces were made in Hawthorne (lavender) and crystal with colored handles.

The primary pattern number is 411, but a few pieces are numbered 412 and 413, and the straight-sided hotel sugar is 414.

Most of the Tudor molds were used to make multiple pieces by reshaping the items while still hot from the mold.

Tudor is similar to McKee's Lenox pattern, but Lenox has double ribs where Tudor has singles.

Carole collected her set because she lived in an English-style house, which she mistakenly thought was Tudor, but it lacked the wood décor that Tudors have, so it was not. But she liked the pattern and kept collecting it anyway.

Among his other glass interests, Dennis is a Heisey cream and sugar collector, so he brought some hard-to-find crystal with Moongleam and Hawthorne pieces. Janice Wallace is a diehard Heisey collector, and she brought a Hawthorne candy dish.

Tudor has not been reproduced, but Carole did find milkshake glasses that looked very much like it at Dollar Tree.



CANDY DISH NIGHT

PROG's "sweetest meeting of the year" is our annual October Candy Dish Night. Our winners were: Linda Sprau, Best Candy for her caramel candies with peanuts in a L.E. Smith dish; Jerry Linschoten, Best Open Candy Dish for his Delaware EAPG bowl filled with Reeses candies; Carole Bess White, Best Covered Candy Dish for her orange and white 1920s-30s Czech covered candy and black glass tray filled with See's Chocolate-Orange Wafers.

Thanks to Barbara Dietz and Gyrid Hyde-Towle for counting the votes, and to the many members brought additional wonderful candy dishes filled with the sweet treats we all love:

Jan Baxter, Fenton blue opalescent hobnail covered candy

Kate Fuller, green covered candy box with homemade brownie bites

Debbie Larsen, unknown dish with Butterfinger Bites

David Sprau, orange dish with wrapped candies

Janice Wallace, Hawthorne Heisey Tudor bowl with assorted chocolates

Karen Young, crystal footed dish with vanilla creams



CONVENTION COMMITTEE

**NEXT MEETING WILL BE WEDNESDAY, NOVEMBER 11
6:00 P.M. POTLUCK, 7:00 P.M. MEETING
AT BARBARA COLEMAN'S HOUSE, 2226 N.E. HANCOCK, 503-281-1823
THE GLASS COLLECTORS CONVENTION WILL BE MAY 19-20-21, 2016**

SALE COMMITTEE

**NEXT MEETING WILL BE TUESDAY, DECEMBER 1
POTLUCK 6:00, MEETING 7:00
AT CAROLE WHITE'S HOUSE, 6906 N.E. HANCOCK, 503-901-0505
(WE WILL MOVE THE MEETING TO THE EASTERN CATHAY RESTAURANT AT
N.E. 82nd & HALSEY IF MORE THAN 12 R.S.V.P. YES)**

OUR SALE WILL BE JANUARY 30 & 31, 2016

THE SALE IS OUR MAJOR FUNDRAISER FOR THE YEAR, AS WELL AS ONE OF MOST FUN ACTIVITIES!
OUR MEMBERSHIP DUES BARELY COVER PRINTING AND MAILING OUR NEWSLETTER, SO WE HAVE TO
RAISE THE MONEY FOR OUR MEETING PLACE AND STORAGE UNIT RENTAL, FOOD AND OTHER COSTS.

**PLEASE CONSIDER VOLUNTEERING FOR A SALE COMMITTEE
OR SIGNING UP FOR A SHIFT OR TWO AT THE SALE.**



CLUB DISPLAYS—Susan Conroy and Jan Baxter

The displays are card table-sized and can be any antiques, glass or collectibles that are kitchen-related. We are looking for a variety to show the interests of our members. See Susan or Jan to participate, email Susan at s.conroy09@gmail.com or Jan at jan_baxter@comcast.net or phone Susan at 503-232-1243 or Jan at 503-761-6935.



FRIDAY LUNCH—Gyrid Hyde Towle

Sandra Martin will make her delicious taco soup. The menu will be: soup, make-your-own sandwiches, soda, water, cookies and chips. We will invite Hot Dog Ernie to return as our food vendor.



MEMBER SALE BOOTH—Barbara Coleman and Kate Fuller

PROG members may purchase space at the show from a half-table up to two full tables. The prices are \$41 for a half and \$82 for a whole table, which includes a small fee to cover electricity, price tags and wrapping. There will be one, central cash/wrap table, so members don't need to take their own payments. See Barbara or Kate to rent space, or email Barbara at colelee@easystreet.net or Kate at klynf50@gmail.com, or call Barbara at 503-281-1823.



BOOK SALE—

On Sunday we will sell the books at half price, and we will also have a free book box. We are looking for donations of reference books on antiques, collectibles and glass, cookbooks and other nice books. To donate see Carole Bess White or contact her at cbessw@aol.com or 503-901-0505.



RAFFLE—

We are looking for a donation of a nice piece of glass for the raffle. We will move raffle ticket sales to the table opposite the front door where door prize slips are deposited. That way it will get more attention and garner more sales.



PROG'S 2015

MINI

AUCTION

**TUESDAY, NOVEMBER 17
AT THE CLUB MEETING**

AUCTION ITEMS PICTURED ABOVE:

AMBER BLENKO VASE

NORTHWOOD 636 RED CANDY JAR

CAMBRIDGE CROWN TUSCAN NAUTILUS VASE

THERE'S SOMETHING FOR EVERYONE AT THE ACTION!
WOULDN'T YOU LIKE TO ADD A NEW PIECE TO YOUR COLLECTION?

SEEKING DONATIONS FOR CONVENTION ALCOHOL FEES



The Grotto charges PROG \$300 for insurance and servers to have beer and wine available at the three Glass Collectors Convention evening meals, over and above the cost of the drinks. While we have no problem with alcohol being served, the convention budget just won't stretch to cover these fees. So, we are seeking donations to cover them. If you would like to have alcohol available, please pledge \$25, \$50, \$100 or \$300. Please contact Mark Moore, convention chairman, at mark@pdxhistory.com or 503-286-5224.

❖ INSIDE ❖

Portland's Rain of Glass, Inc.

- Heisey Tudor
- Candy Dish Night
- October Meeting Winners
- Mini Auction

THE 36th P.R.O.G.

S ♦ A ♦ L ♦ E

A WONDERFUL ARRAY OF TREASURES FOR YOU & YOUR HOME!



DECADES OF

GLASS ♦ CHINA ♦ POTTERY ♦ SILVER ♦ KITCHENWARE
LINENS ♦ JEWELRY ♦ REFERENCE BOOKS & MUCH MORE

JANUARY 30 & 31, 2016

SAT 9 AM-5 PM ♦ SUN 10 AM-4 PM

WASHINGTON COUNTY FAIRGROUNDS, HILLSBORO, OREGON

FREE ADMISSION FOR PORTLAND'S RAIN OF GLASS MEMBERS!

INFORMATION 503-901-0505 ♦ cbessw@aol.com ♦ www.rainofglass.org